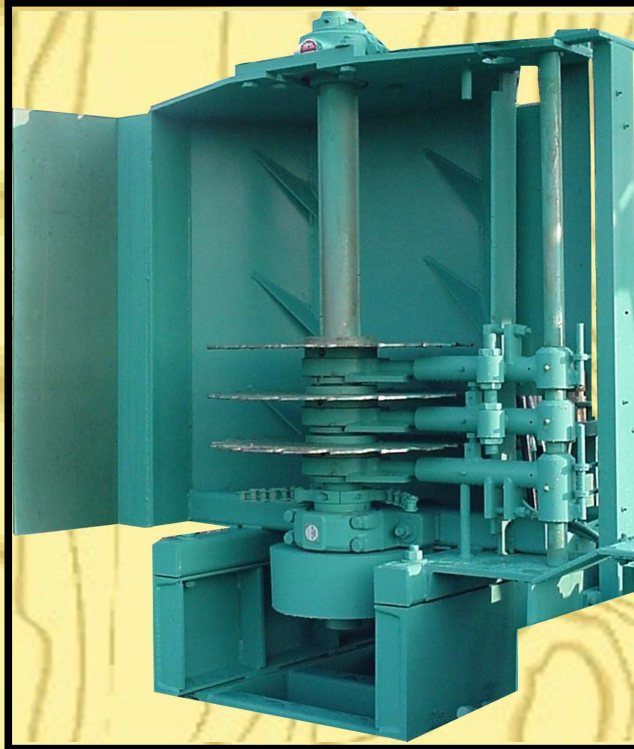


The HELLE Vertical Edger



Equipment may vary from what is pictured.

PARTS MANUAL

HELLE Sawmill Equipment

Mfg. by Sawmill Hydraulics, Inc.

1-800-245-2448

www.4HELLE.com

PARTS:
**2 15/16" VERTICAL EDGER
MANDREL BEARINGS**



**BEARING INSERT
FOR EITHER BEARING
PART # 01-B-080**



**TOP BEARING
PART # 01-A-100**



**BOTTOM BEARING
PART # 01-D-0175**

PARTS: VERTICAL EDGER DRIVES

IF YOUR MOTOR IS MOUNTED ON THE TOP OF YOUR EDGER IT USES THESE PARTS FOR THE DRIVE.
(THIS IS ALSO KNOWN AS A TOP MOUNT.)

NOTE: WHEN ORDERING COUPLING HUB HAVE SHAFT DIAMETER FOR BORE SIZE, OR MOTOR HP.



**COUPLING HUB
PART # 06-E-040**



**CHAIN FOR COUPLING
PART # 06-B-040**

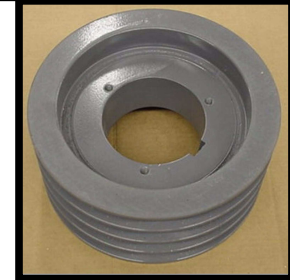
IF YOUR MOTOR IS MOUNTED ON THE BOTTOM OF YOUR EDGER IT USES THESE PARTS FOR THE DRIVE.
(THIS IS ALSO KNOWN AS A BOTTOM MOUNT.)



BELTS

(4 BELTS ARE NEEDED FOR EACH DRIVE)

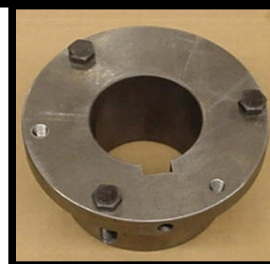
HORSEPOWER	PART #
40 HP	02-B-015
50HP	02-B-015
75HP	02-B-065



PULLEY

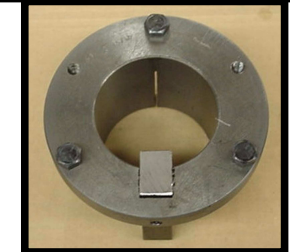
FOR EITHER MANDREL OR MOTOR

PART # 36-A-061



MOTOR BUSHING

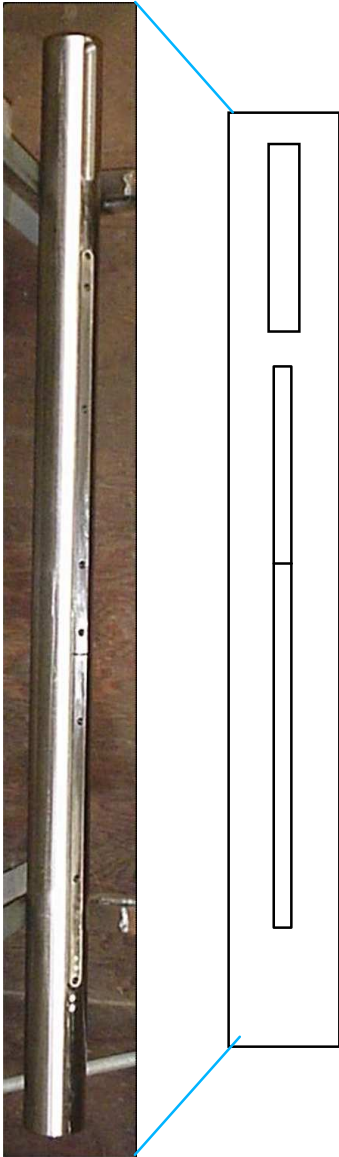
HORSEPOWER	PART #
40HP	03-A-070D
50HP	03-A-070D
75HP	03-A-070H



MANDREL BUSHING

PART # 03-A-070M

**PARTS:
2 15/16" VERTICAL EDGER
MANDRELS & KEYS**



**2-15/16" MANDREL
(MANDRELS INCLUDE THE KEYS)**

3-SAW TOP MOUNT MOTOR		3-SAW BOTTOM MOUNT MOTOR	
LENGTH	PART #	LENGTH	PART #
49"	32-A-070	52"	32-A-065
52"	32-A-065	57"	32-A-080
57"	32-A-080		

**2-15/16" MANDREL KEYS
(KEYS INCLUDE NEEDED BOLTS)**

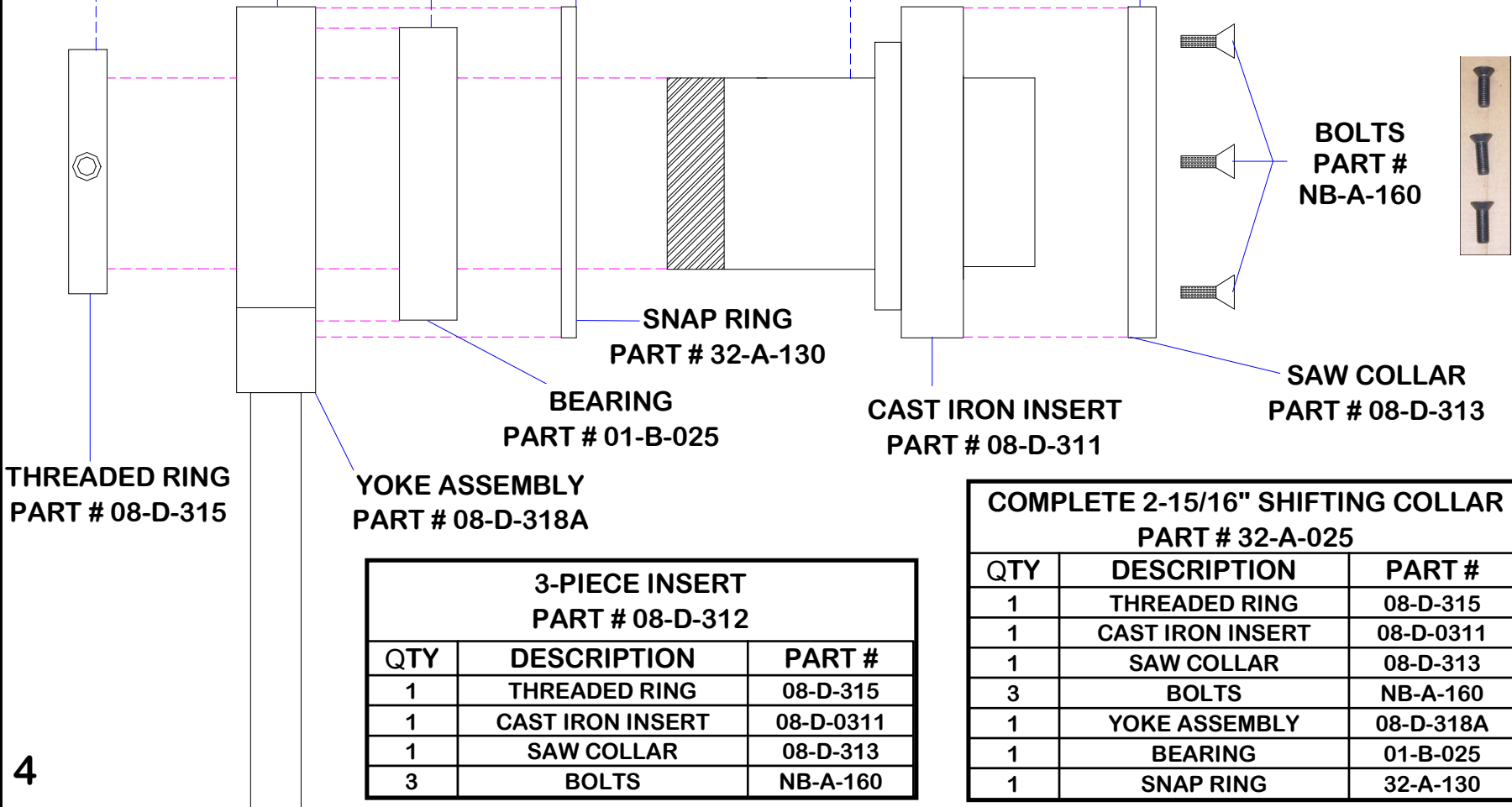
(TO REDO A COMPLETE MANDREL YOU WILL NEED 2 OF EACH KEY)

3-SAW		4-SAW	
LENGTH	PART #	LENGTH	PART #
19"	32-A-089	18"	***
15-1/2"	32-A-088	22-1/2"	***

NOTE: THESE ARE "SPLIT" KEYS, IF YOUR EDGER HAS A SOLID KEY YOU WILL NEED A KIT PART # 32-A-500

*** = CALL FACTORY FOR PART NUMBER AT 1-800-245-2448

PARTS: 2 15/16" VERTICAL EDGER SHIFTING COLLAR



THREADED RING
PART # 08-D-315

YOKE ASSEMBLY
PART # 08-D-318A

BEARING
PART # 01-B-025

SNAP RING
PART # 32-A-130

CAST IRON INSERT
PART # 08-D-311

SAW COLLAR
PART # 08-D-313

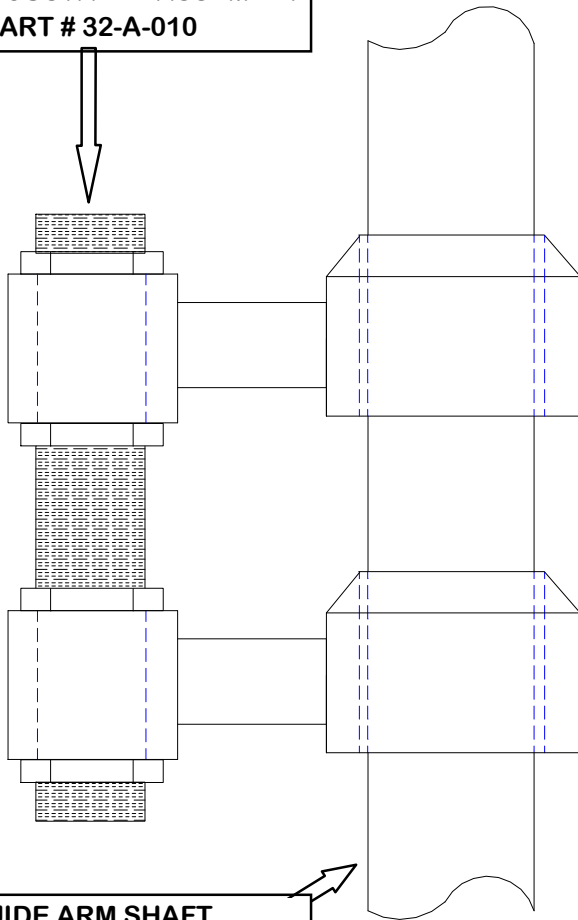
BOLTS
PART #
NB-A-160

3-PIECE INSERT PART # 08-D-312		
QTY	DESCRIPTION	PART #
1	THREADED RING	08-D-315
1	CAST IRON INSERT	08-D-0311
1	SAW COLLAR	08-D-313
3	BOLTS	NB-A-160

COMPLETE 2-15/16" SHIFTING COLLAR PART # 32-A-025		
QTY	DESCRIPTION	PART #
1	THREADED RING	08-D-315
1	CAST IRON INSERT	08-D-0311
1	SAW COLLAR	08-D-313
3	BOLTS	NB-A-160
1	YOKE ASSEMBLY	08-D-318A
1	BEARING	01-B-025
1	SNAP RING	32-A-130

PARTS: 2 15/16" VERTICAL EDGER SHIFTING ASSEMBLY

2 SAW ADJUSTABLE ASSEMBLY
PART # 32-A-010



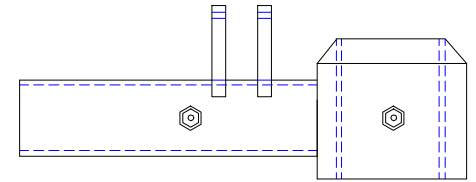
GUIDE ARM SHAFT
(STANDARD LENGTH OF 39")
PART # 32-A-060

(VIEW FROM SIDE OF VERTICAL EDGER)

5

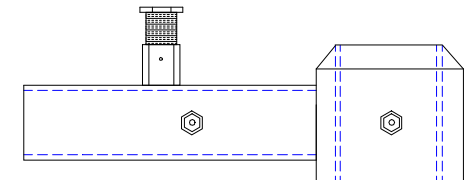
3" TOP GUIDE ASSEMBLY PART # 32-A-140

QTY	DESCRIPTION	PART #
1	BRONZE BUSHING	03-B-018
1	CYLINDER CLEVIS	16-A-080



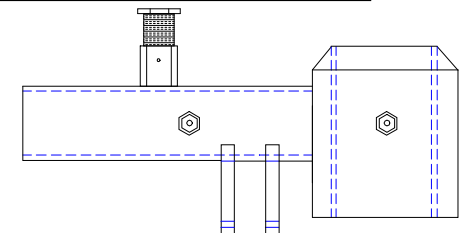
3" MIDDLE GUIDE ASSEMBLY PART # 32-A-148

QTY	DESCRIPTION	PART #
1	BRONZE BUSHING	03-B-018
1	ADUJUSTABLE STOP	32-A-015



5" BOTTOM GUIDE ASSEMBLY PART # 32-A-020

QTY	DESCRIPTION	PART #
1	BRONZE BUSHING	03-B-019
1	ADUJUSTABLE STOP	32-A-015
1	CYLINDER CLEVIS	16-A-080



PARTS: VERTICAL EDGER HYDRAULIC PARTS

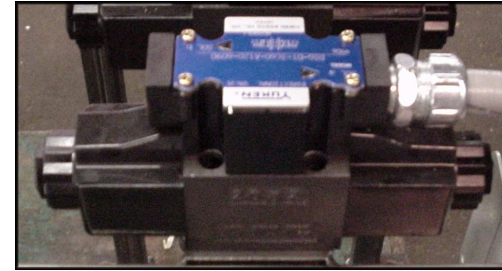


VERTICAL EDGER CYLINDERS

DESCRIPTION	PART #
TOP SAW CYLINDER	07-C-085
MIDDLE SAW CYLINDER	07-C-070
BOTTOM SAW CYLINDER	07-C-010
MOVEABLE BASE CYLINDER	07-C-020

NOTE:
FOR A PARTS BREAK DOWN OF
THE CYLINDER SEE THE PAGE
LABELED: 2" CYLINDER SEAL KIT

IF YOUR VALVE LOOKS LIKE THIS:



**IF IT IS LABELED
NORTHMAN YOU
HAVE A PART # 31-B-132**

PARTS

DESCRIPTION	PART #
O-RINGS *	24-C-005
120 VAC COIL	08-C-150

*** EACH VALVE REQUIRES 4
OF THESE O-RINGS**

**IF IT IS LABELED
YUKEN YOU HAVE
A PART # 31-B-132Y**

PARTS

DESCRIPTION	PART #
O-RINGS *	24-C-005
120 VAC COIL	CALL 1-800-245-2448

IF YOUR VALVE LOOKS LIKE THIS:



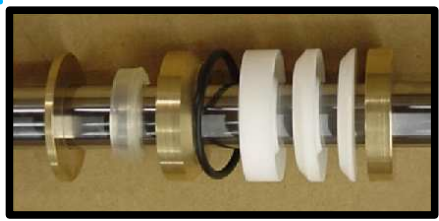
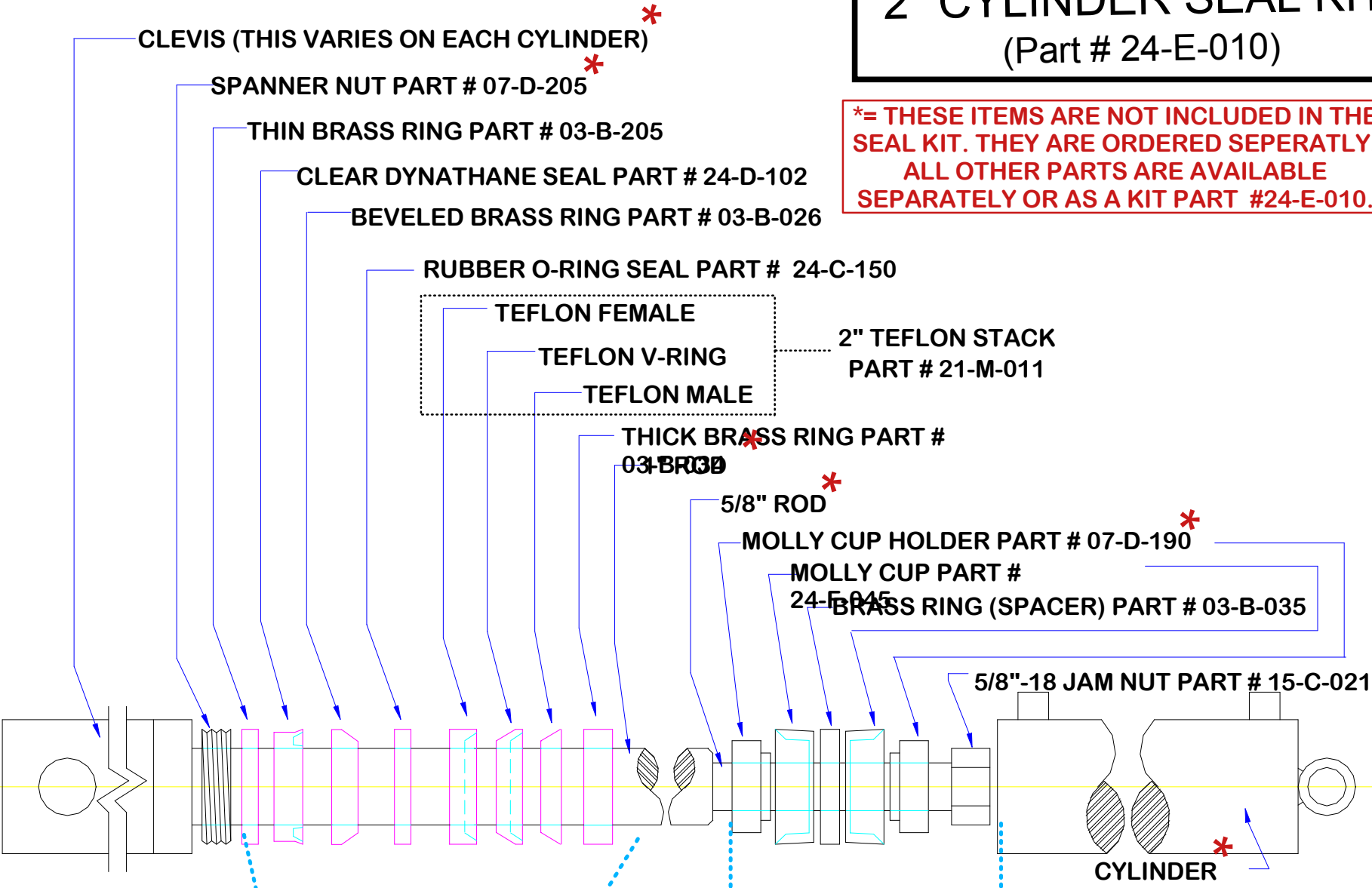
**THEN YOU HAVE A
PART # 31-B-120**

PARTS

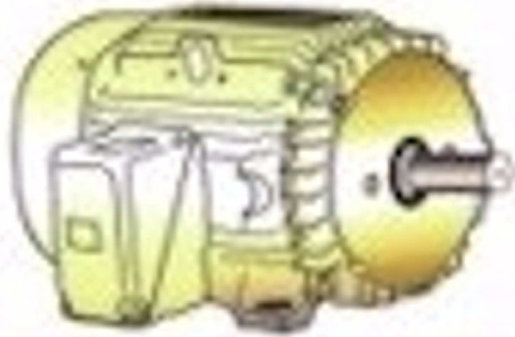
DESCRIPTION	PART #
O-RING KIT	24-E-065
120 VAC COIL	08-C-025
SEAL KIT	24-E-151

2" CYLINDER SEAL KIT (Part # 24-E-010)

***= THESE ITEMS ARE NOT INCLUDED IN THE SEAL KIT. THEY ARE ORDERED SEPERATLY. ALL OTHER PARTS ARE AVAILABLE SEPARATELY OR AS A KIT PART #24-E-010.**



**PARTS:
2 15/16" VERTICAL EDGER
VARIOUS PARTS**



VERTICAL EDGER MOTORS

Description	Part #
40 HORSEPOWER	20-A-086
50 HORSEPOWER	20-A-092
75 HORSEPOWER	20-A-007

NOTE:
FOR MOTORS OTHER THAN THE
ONES LISTED, PLEASE CALL THE
FACTORY AT 1-800-245-2448

THE PROX SWITCH LOOKS LIKE EITHER:



**PART #
08-E-124**



**PART #
08-E-113**

OR THIS:

NOTE: Both switches are interchangeable
with each other, refer to the information that
comes with the new prox for more info.



**V.E. SAWDUST PROPELLER
PART # 01-D-0175**

**PARTS:
2 15/16" VERTICAL EDGER
SAWBLADES**



DESCRIPTION	PART #
18" SAWBLADE	32-A-085
22" SAWBLADE	32-A-090
24" SAWBLADE	32-A-093
22" SPLIT SAWBLADE-36 TEETH*	32-B-000
22" SPLIT SAWBLADE-18 TEETH*	32-A-09S

***=THIS BLADE REQUIRES A SPECIAL 4 BOLT
COLLAR, CONSULT FACTORY WHEN
ORDERING.**



**WE STILL MAKE HOUSE CALLS.
CALL TODAY TO SCHEDULE A SERVICE CALL**

By Phone At:
1-800-245-2448

By Fax At:
(309)-245-5126

By Mail At:
Sawmill Hydraulics, INC.
23522 W. Farmington Road
Farmington, IL 61531

By E-mail At:
Parts@4HELLE.com

Or Visit Us On The Web At:
www.4HELLE.com

To order these or any other parts for your sawmill equipment, please feel free to contact us.



Thank you for
your continuing
business.



WE ARE HERE TO SERVICE YOU!

Live Deck: Standard & Heavy Duty
Carriages: 36", 40", 48", 60" openings
Overhead End Dogging Scragg Mill
Hydrostatic Feedworks: 40, 60, 100HP
Vertical Edger: 2, 3, and 4 Saw
Model B, C, and D Log Turners
Double End Trimmer
Husk & Offbearers
Computerized Setworks
Custom Built Sawmill Machinery
Rebuilt And Used Equipment
And Much, Much More

HELLE Sawmill Equipment

Mfg. by Sawmill Hydraulics, Inc.

23522 W. Farmington Road

Farmington, IL 61531

1-800-245-2448

www.4HELLE.com

FAX 309-245-2448

The Leader In Sawmill Technology

Ahead In Design And Engineering

